

Just a reminder of next Wednesday's events relating to Emerald Ash Borer infestations in Greene County. I am also attaching a map from the DEC that shows the number of EAB confirmed locations in the region. This map shows over a dozen in Greene County, including Haines Falls in the Catskills. You can use the magnifying glass icon to magnify the map and see details of locations.

Again, the specifics for Wednesday are:

Wednesday, March 13 at 1:00 pm at the infestation site (will send details about the exact location).

Follow- up discussion indoors with key stakeholders at the Catskill Town Office building on Main Street in Catskill immediately following the 1:00 pm event to discuss future strategies.

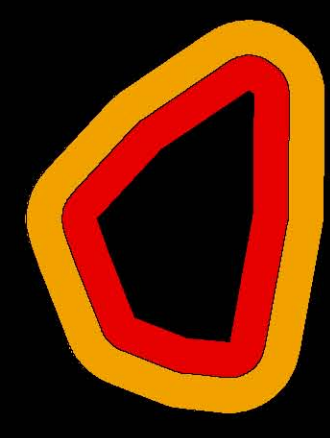
Mark Whitmore from Cornell University, who coordinates invasive forest pests statewide, agreed to come to the site and explain issues we need to consider as we move forward with planning for the continued spread of EAB.

Please let me know ASAP if you can attend by email or call (518) 622-9820 X0. Now is the time to plan!

Marilyn Wyman

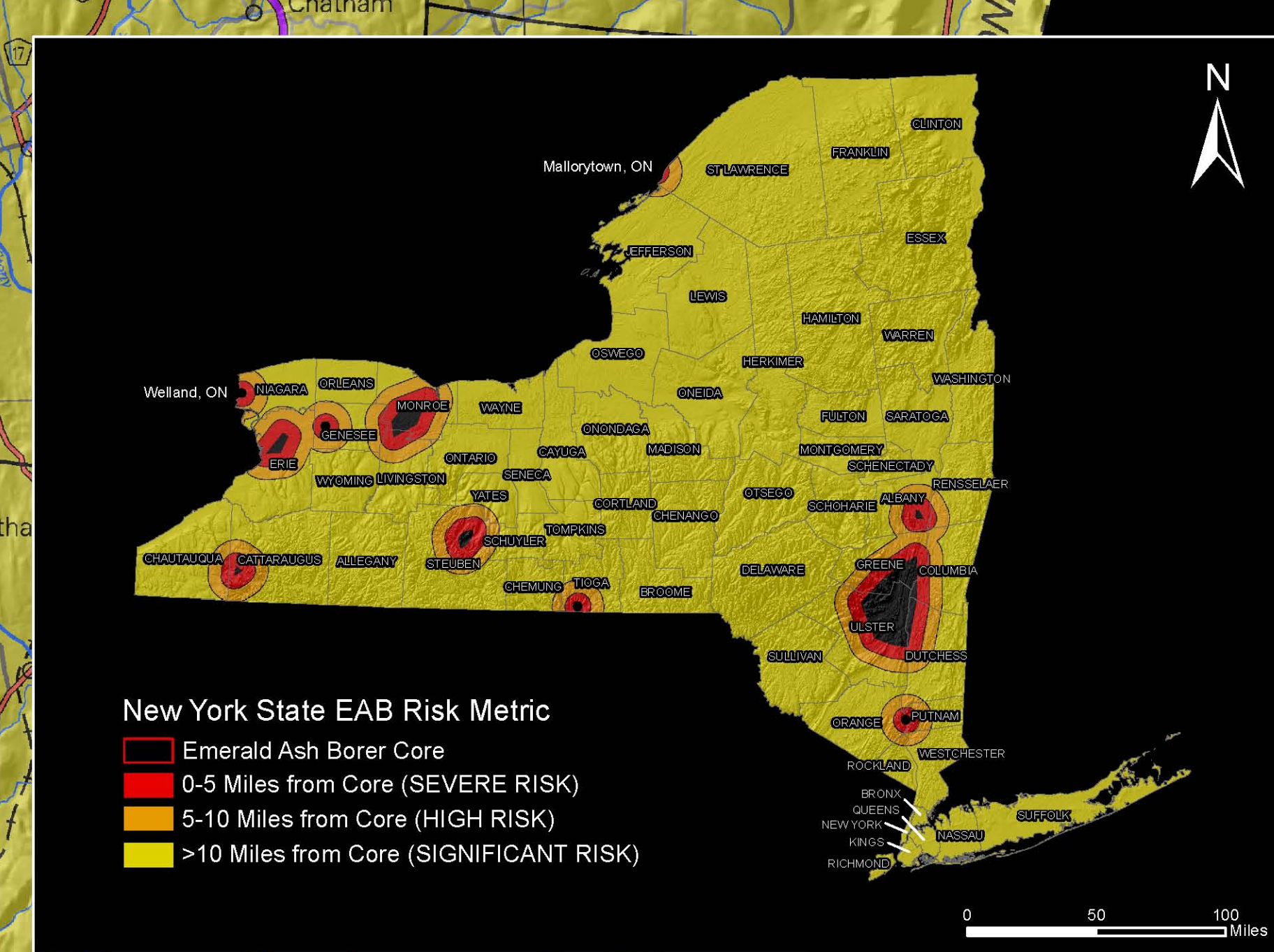
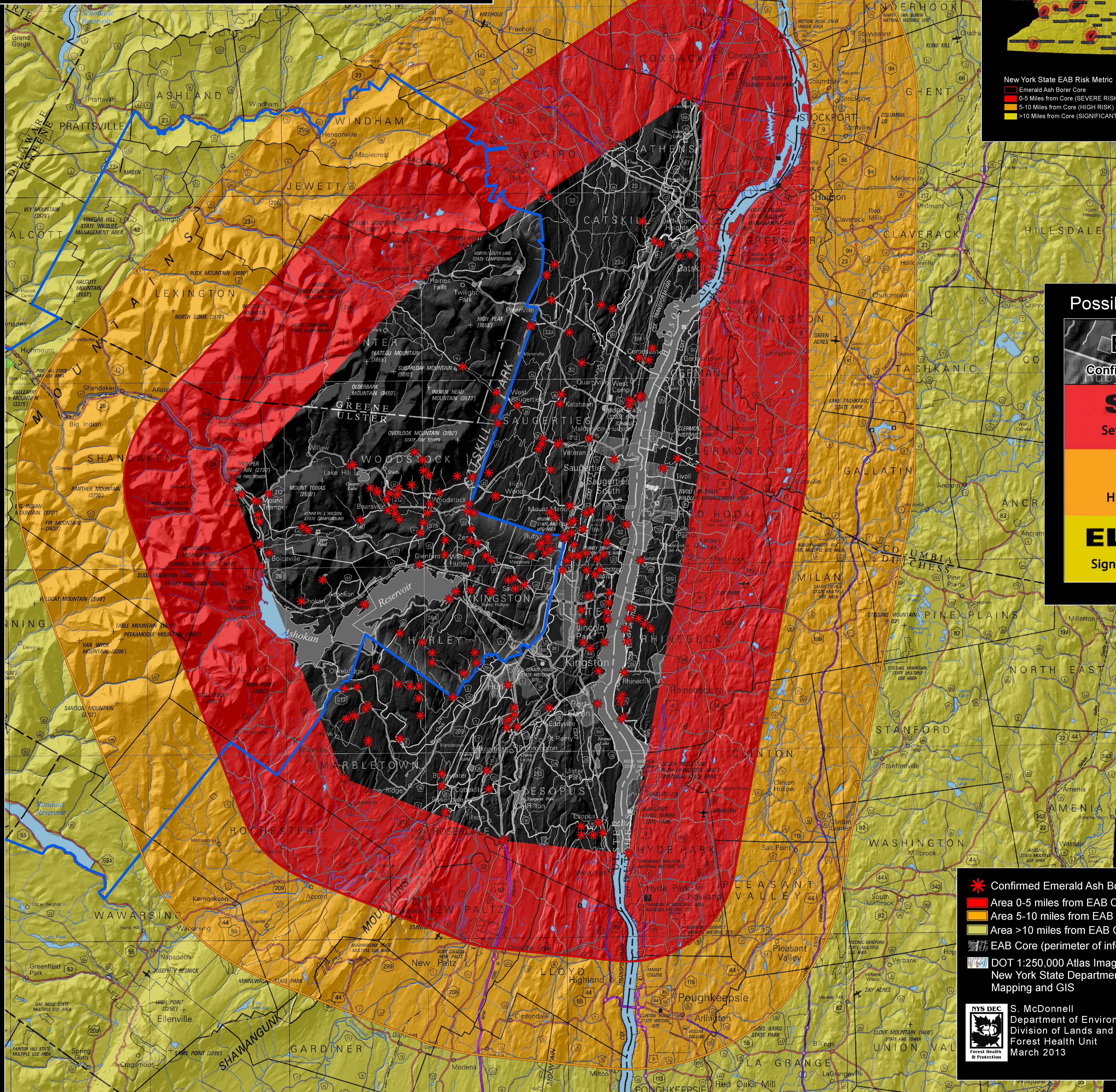
Issue Leader - Natural Resources and the Environment  
New York Invasive Species Outreach  
Cornell Cooperative Extension of Columbia & Greene Counties  
6055 Route 23  
Acra, NY 12405  
518-622-9820 ext. 36  
518-622-0115 (fax)





# Emerald Ash Borer (EAB) Management Response Plan 2013 Mid-Hudson (Tier 3) Last Updated 03/2013

Emerald Ash Borer Risk



Possible EAB Risk Levels

**EAB CORE**  
Confirmed EAB Infested Trees

**SEVERE**  
Severe Risk of EAB Attacks

**HIGH**  
High Risk of EAB Attacks

**ELEVATED**  
Significant Risk of EAB Attacks

Confirmed Emerald Ash Borer (EAB)  
 Area 0-5 miles from EAB Core (SEVERE RISK)  
 Area 5-10 miles from EAB Core (HIGH RISK)  
 Area >10 miles from EAB Core (SIGNIFICANT RISK)  
 EAB Core (perimeter of infested trees)  
 DOT 1:250,000 Atlas Image - New York State  
New York State Department of Transportation, Mapping and GIS

S. McDonnell  
Department of Environmental Conservation  
Division of Lands and Forests  
Forest Health Unit  
March 2013

0 5 Miles